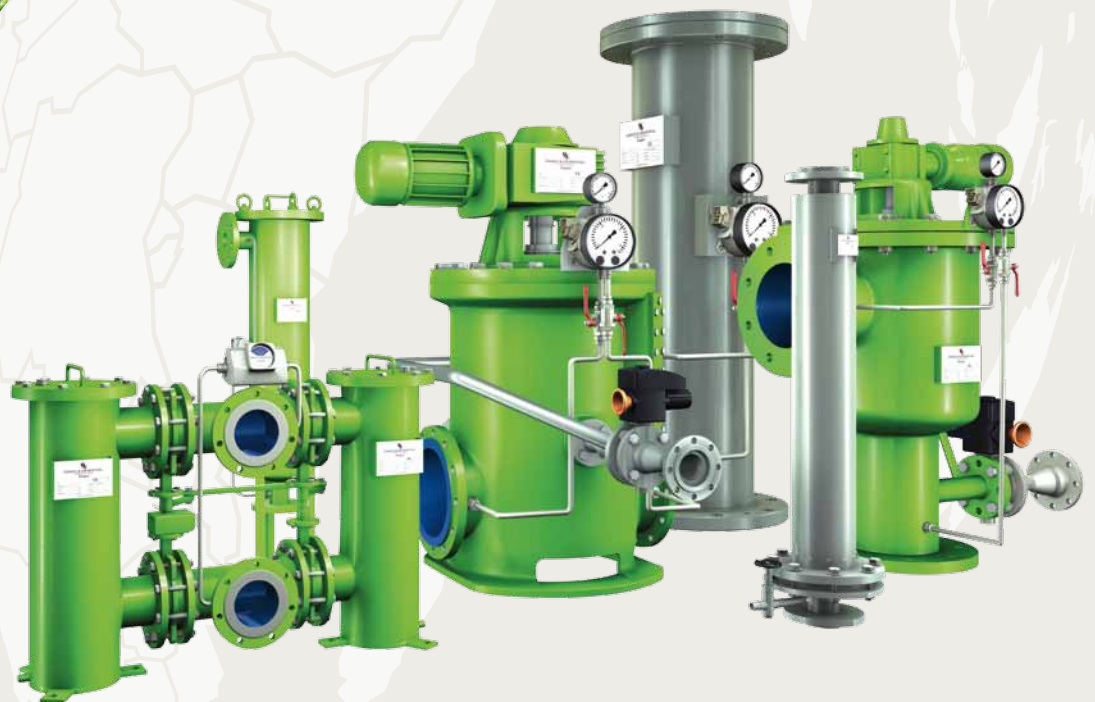




DANGO & DIENENTHAL

Filtertechnik GmbH

World of Filtration



High Performance for Industry



Power Plants



Building Installations



Steel Industry



Paper Industry

Industrial Filters by DANGO & DIENENTHAL

DANGO & DIENENTHAL has been a reliable partner for the filtration of liquids in nearly all ranges of industry for about 70 years. Then and now, our customers' steadily increasing requirements have stimulated our enthusiasm for innovation. Qualified engineers and modern production also ensure continuous development of our product range.

Filters are always individually dimensioned for the given operating conditions. This results in satisfied customers.

Our filter systems are especially appreciated by long-standing clients because of:

- reliable filtration of solids
- trouble-free operation
- minimal cost of operation and maintenance

Our "Made in Germany" filters meet a very high performance and quality standard.

In the following you will find a short description of our automatic and manual filter systems for solid/liquid separation.





The New Definition of Purity for Your Medium

Our Filter Systems Protect:



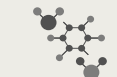
Cooling Water



River Water



Sea Water and Ballast Water



Sinter and Scale Separation



Emulsions



Process Water



Oils

Mussel / Mussel Larvae Separation



Plate Heat Exchangers



Spray Nozzles



Piping Systems



Mechanical Seals



Pumps



Micro Filtration



DANGO & DIENENTHAL
Filtertechnik GmbH

Continuous Filtration – Day and Night



Legend



Inline Design



Continuous Filtration



High-Speed Cleaning



100% Cleaning of the Filter Element



Fine Filtration Possible



Low Wear, Without Moving Parts



Energy-Saving Operation

Filterautomat (DDF)



Good, better, DDF



The Filterautomat is distinguished by an extremely robust design and an excellent backflushing performance. The complete filter area is cleaned by a rotating filter drum.

flow rate	5 m³/h to 10,500 m³/h
filter fineness	≥ 5 µm
operating pressure	0.8 to 63 bar
flange	DN 50 to DN 1000
automatic backwash	✓
filter housing	cast iron, steel, stainless steel



Backwash Drum Filter (RTF)



Successful technology in new design

The Backwash Drum Filter is based on the Filterautomat's filtration and backwash principle. However, a more individual choice of materials for more demanding mediums can be realized.



flow rate	80 m³/h to 4,000 m³/h
filter fineness	≥ 5 µm
operating pressure	1.5 to 63 bar
flange	DN 100 to DN 1000
automatic backwash	✓
filter housing	steel, stainless steel, GRP

Backwash Drum Filter S (RTF-S)



Successful technology in new design

The Backwash Drum Filter S is distinguished by an excellent backwash performance and a compact design. An individual choice of materials for more demanding mediums can be realized.



flow rate	3 m³/h to 100 m³/h
filter fineness	≥ 5 µm
operating pressure	1.5 to 63 bar
flange	DN 40 to DN 100
automatic backwash	✓
filter housing	steel, stainless steel, GRP



DANGO & DIENENTHAL
Filtertechnik GmbH

Reliable – All Over the World

JET Filter (JET)



Filtration in any position

Inline filter without moving inner parts. The patented design allows for nearly all materials, flow rates, and mounting positions.

flow rate	1 m³/h to 25,000 m³/h
filter fineness	≥ 50 µm, ≤ 5 mm
operating pressure	1.5 to 63 bar
flange	DN 50 to DN 3000
manual/automatic backwash	✓
filter housing	steel, stainless steel, plastic, glass-fibre-reinforced plastic (GRP)

Plate Filter (PLF)



Powerful coarse filtration

Massive inline filter with diagonally positioned sieve plate. Manual or automatic backwashing is optionally available.

flow rate	5 m³/h to 2,500 m³/h
filter fineness	≥ 500 µm
operating pressure	0.3 to 25 bar
flange	DN 80 to DN 500
manual/automatic backwash	✓
filter housing	cast iron, glass-fibre-reinforced plastic (GRP)



Separator (SPR)



Spinning around

A turbo disc in the filter inlet makes the volume flow rotate. Particles are thus separated by centrifugal forces.



flow rate	2 m³/h to 250 m³/h
filter fineness	≥ 5 µm
operating pressure	2 to 63 bar
flange	DN 50 to DN 200
filter housing	steel, stainless steel, plastic

Multi-Separator (M)



Well packaged

The housing of the Multi-Separator integrates several Separators. Therefore larger flow rates can be effectively filtered.



flow rate	120 m³/h to 3,000 m³/h
filter fineness	≥ 5 µm
operation pressure	2 to 63 bar
flange	DN 150 to DN 700
filter housing	steel, stainless steel



Massive and Powerful

Single Filter (EF)



Quite simple

Manual Filter, which separates particles from the volume flow with a filter basket. The volume flow has to be interrupted for cleaning the filter.



flow rate	5 m³/h to 10,000 m³/h
filter fineness	≥ 10 µm
operating pressure	0 to 63 bar
flange	DN 15 to DN 1000
manual backwash	✓
filter housing	cast iron, steel, stainless steel, glass-fibre-reinforced plastic (GRP)

Duplex Filter (DF)



One on standby

A switch-over unit enables one filter to be in operation, while the other is on standby. This allows continuous operation without interruption for cleaning.



flow rate	5 m³/h to 10,000 m³/h
filter fineness	≥ 10 µm
operating pressure	0 to 63 bar
flange	DN 15 to DN 500
manual backwash	✓
filter housing	cast iron, steel, stainless steel



Bag Filter (EFBS)



Everything in a bag

Manual Filter with a filter bag made of different materials, e.g. nylon or needle-felt. A large filtration area and a filtration fineness of $\geq 1 \mu\text{m}$ characterize this filter.



flow rate	0 m³/h to 60 m³/h
filter fineness	$\geq 1 \mu\text{m}$
operating pressure	0 to 63 bar
flange	DN 50 to DN 100
manual backwash	✓
filter housing	steel, stainless steel

Multi-Bag Filter (EFBM)



Extensive filtration area

In the Multi-Bag Filter several filter bags are integrated in the housing. This allows for higher flow rates or longer operating time.



flow rate	60 m³/h to 300 m³/h
filter fineness	$\geq 1 \mu\text{m}$
operating pressure	0 to 63 bar
flange	DN 100 to DN 500
manual backwash	✓
filter housing	steel, stainless steel



Smart Solutions – Down to the Last Detail



Backflushing Cartridge Filter (RKF)



Great!

The principal item in the Backflushing Cartridge Filter is a rotary disc, in which the filter cartridges are integrated. This design is applicable for large flow rates because the cartridges are automatically cleaned one after the other.



flow rate	2,000 m³/h to 10,000 m³/h
filter fineness	≥ 50 µm
operating pressure	1.5 to 25 bar
flange	DN 80 to DN 1800
automatic backwash	✓
filter housing	steel, stainless steel

Combi Filter (DCF)



Safe in combination

The Combi Filter is a combination of Separator and Cartridge Filter. In the first step coarse particles are separated by centrifugal forces. In the next step filter elements remove the fine parts from the volume flow.



flow rate	5 m³/h to 2,000 m³/h
filter fineness	≥ 30 µm
operating pressure	2 to 25 bar
flange	DN 50 to DN 700
automatic backwash	✓
filter housing	steel, stainless steel



Dynamic Filter (DSF / DTF)



Long fibers welcome

The long curved filter elements in the Dynamic Filter are particularly suitable for filtration of long fibrous components in the volume flow. The automatic cleaning of the dynamic filter element is very effective.



flow rate	20 m³/h to 400 m³/h
filter fineness	≥ 50 µm
operating pressure	1 to 63 bar
flange	DN 50 to DN 200
automatic backwash	✓
filter housing	steel, stainless steel

Sludge Dewatering Device (SCHLAMMCON)



Completely different

Coarse particles are retained inside the Schlammcon by a box-type filter fleece. The bottom of the Schlammcon can be opened for disposal of the filter fleece including contents very simply. This system can also be combined with our automatic filters.



volume	1 m³
filter fineness	≥ 5 µm
manual exchange	✓
filter housing	steel, stainless steel



DANGO & DIENENTHAL
Filtertechnik GmbH

Products

Automatic Filters

- Filterautomat
- Backwash Drum Filter
- Backwash Drum Filter S
- JET Filter

Hydrocyclones

- Separator
- Multi-Separator

Manual Filters

- Plate Filter
- Single Filter
- Duplex Filter
- Bag Filter
- Multi-Bag Filter

Miscellaneous

- Backflushing Cartridge Filter
- Combi Filter
- Dynamic Filter
- Sludge Dewatering Device



DANGO & DIENENTHAL
Filtertechnik GmbH

P.O.Box 100203 • 57002 Siegen • Hagener Straße 103 • 57072 Siegen, Germany
Phone +49 (0) 271-401-4123 • Fax +49 (0) 271-401-4135 • E-mail: post@dds-filter.com
www.dds-filter.com